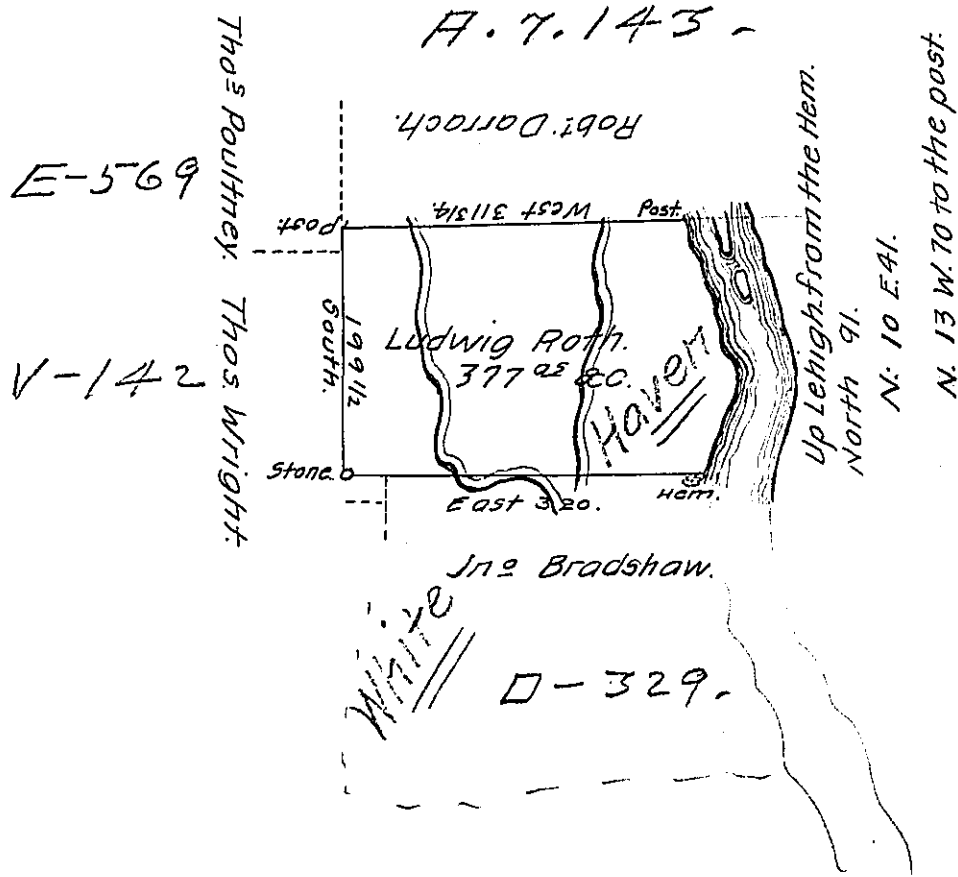


Foster -  
Luzerne.



A Draft of a tract of land Called — situate on the west side of Lehigh — in the county of Luzerne (warrant says Northamp<sup>l</sup>) Containing three Hundred and Seventy seven acres & allow<sup>s</sup> surveyed for Ludwig Roth the tenth day of June, 1793, by virtue of a warrant dated the 3<sup>d</sup> day of April, 1792.

To Daniel Broadhead, Esq<sup>r</sup>,  
Sur. Gen<sup>l</sup>.

By Wm. Gray, D.S.

IN TESTIMONY that the above is a copy of the original remaining on file in the Department of Internal Affairs of Pennsylvania, made conformably to an Act of Assembly approved the 16th day of February, 1833, I have hereunto set my Hand and caused the Seal of said Department to be affixed at Harrisburg, this twenty seventh day of June, 1910.

*Henry Howell*  
Secretary of Internal Affairs.